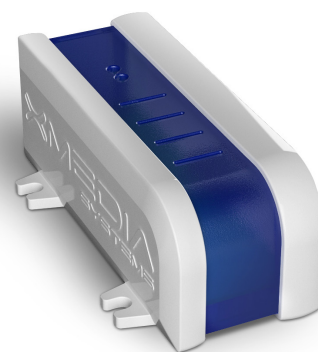




EM-1 EXPANSION MODULE

XM range

The nexmosphere modular range is the most versatile tool for providing unique shopper experience into your retail environment. Its scalable form factor, functionality and smart design make it an ideal controller to integrate in virtual any application. Connect any of the nexmosphere elements such as presence sensors, pick-up detectors, touch buttons or LED's to build your own unique shopper journey and optimize it based on the gathered detailed statistics insights the XM-range delivers day-to-day.



EM series

Combine any of the EM modules to create an exact fit for your application. Whether it is the universal 8x X-talk interface, a 5 channel RGB led driver or one of the audio switching modules, all modules work seamlessly together without any need for configuration. See the EM product overview for all module details.

Features

- 3.5mm Jack stereo audio output

Audio out

The EM-1 is the simplified version of the EM-4 -the 4 channel switching audio output- for applications where no audio switching is needed.

- Compatible with all XM-range controllers with FLAC or mp3 player

EM expansion

Combine any of the EM modules to create an exact fit for your application.

- Compatible with any of the EM-modules
- Connect up to 5 EM-modules to one XM-controller
- Pre assembled factory build for your application
- Auto system configuration
- All EM-modules can be centrally controlled by XM-controller

Benefits

- Auto start-up and configuration for highly reliable standalone applications (24/7 operability)
- Combine any of the EM and XM modules to make an exact fit for your application



EM-1 EXPANSION MODULE

Thermal specifications

Operating temperature: +10°C...+40°C/ +50°F ... +104°F
Storage temperature: -20°C...+50°C/ -4°F ... +122°F
Cooling: Passive cooling (no moving parts)

Electrical specifications

Operating voltage: 5VDC
Power consumption: 20mA

Standards and Certifications

Compliant with IEC 60950-1(ed.2);am1;am2
CE certificate
US/CAN certification in progress
RoHS compliant

Miscellaneous

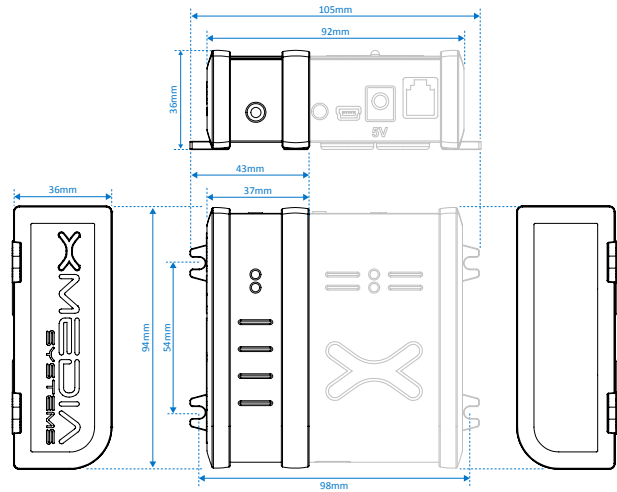
- Robust housing with screw brackets for secure fixing
- Build-in magnets for easy mounting on metal surfaces
- Both horizontal & vertical mounting allowed
- Diagnostic LED indicating potential issues
- Status LED indicating power & input/output operations
- 1 year warranty (optional 3 year extended warranty available)

Packaging

Netto Weight: 32g
Items per carton 1 or 10 pcs (preassembled on XM Xperience controller)

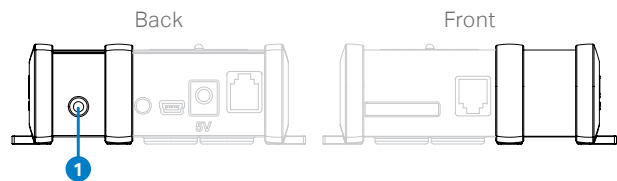
Mechanical dimensions

LxWxH: 94 x 43 x 36 mm / 94 x 105 x 36 mm
Screw fixation: 54 x 98 mm



Hardware interfaces

1. 3.5mm stereo Jack socket for Audio output



Ordering information

Product ID	Description	Quantity
EM-1	Expansion module, 1 channel audio output	1 pc

Nexmosphere

High Tech Campus 10 (Mμ building)
5656 AE Eindhoven • The Netherlands

T +31 40 240 7070
E sales@nexmosphere.com

© 2017 Nexmosphere. All rights reserved. v1.0 / 02-17
All content contained herein is subject to change without prior notice.