



XC-444 / 445 XPERIENCE CONTROLLER

XC range

The nexmosphere compact range is the most cost-effective tool for bringing shopper experience into your retail environment. Its small form factor and smart design makes it an ideal and efficient controller to integrate in any virtual standalone application. Connect any of the nexmosphere elements such as presence sensors, pick-up detectors, touch buttons, or LEDs to build your own unique shopper journey. This system prepares itself for the next shopper automatically, ready to deliver the next in-store experience.



XC-400 series

The 400 series enables shoppers to connect their own devices, such as a mobile phones, and play their favorite tracks in up to four different connected devices. Use the pick-up sensors or touch buttons to switch between the different outputs and compare them in an intuitive way. Create a unique setup to compare the different products on display with the shoppers' own favorite set of tracks.

Features

- High quality MP3 playback
- 4x switchable stereo audio channels
- 4x X-talk+ interface for easy sensor connection
- 4x dimmable LED output

X-talk interface

Connect a wide range of sensors, buttons, LEDs, or any of the nexmosphere elements to create your own unique shopper experience. Let your creativity be the limiting factor by combining the different elements specific to your application. Due to auto-configuration, there is no additional setup required for seamless operation. The X-talk interface also supports industry standard I/O devices, such as push buttons.

- Compatible with any of the nexmosphere elements
- Plug and smile interface
- Providing power to elements for easy system wiring
- Connect standard push buttons (NO/Normal Open)
- Switch external 3.3v LED (X-talk+ interface only)

Audio Input

The audio input can be used to connect any 3rd party audio source (like a mobile telephone) to play the connected content via one or more of the Xperience controllers' audio outputs. Stereo line-in input via 3.5 mm stereo jack

Audio switching

Audio switching redirects the audio stream from the MP3 player to one of the connected outputs. The solid state switching circuit guarantees a fast click-free transition from one output channel to another. Multiple outputs can be selected simultaneously to demonstrate multi-speaker solutions.

- 4x program controlled switchable stereo audio output
- Multiple outputs can be selected simultaneously
- Solid state technology for click-free switching
- Channels can be used as output as well as input
- Supports line-out as well as headphones (AutoDetect)

Dimmable LED interface

The LED output allows connecting any standard LED strip available in the market to illuminate large surfaces. All four outputs are fully dimmable and deliver a smooth fading between the different intensities.

- 12V DC max 1A per channel (4 channel total output 1A max)
- Individually dimmable LED output (PWM/256 steps)
- Wiring size AWG 16-28, solid/stranded copper

XC-444 / 445 XPERIENCE CONTROLLER

Benefits

- Auto start-up and configuration for highly reliable standalone applications (24/7 operability)
- Automatic recovery to an attractive state after a period of inactivity
- Small form factor for easy installment in or behind displays
- Multiple data gathering functionalities offer unique insight into how your application is being used (DLX-200 X-talk data logger required)
- Download application-specific scripts to configure the controller according to your needs (*programmable versions only)

* XSP-100 X-talk programmer required

Thermal specifications

Operating temperature: +10°C...+40°C/ +50°F ... +104°F
 Storage temperature: -20°C...+50°C/ -4°F ... +122°F
 Cooling: Passive cooling (no moving parts)

Electrical specifications

Operating voltage: 12VDC
 Maximum power rating: 2A
 Reverse polarity protection

Standards and Certifications

Compliant with IEC 60950-1(ed.2);am1;am2
 CE certificate
 US/CAN certification in progress
 RoHS compliant

Miscellaneous

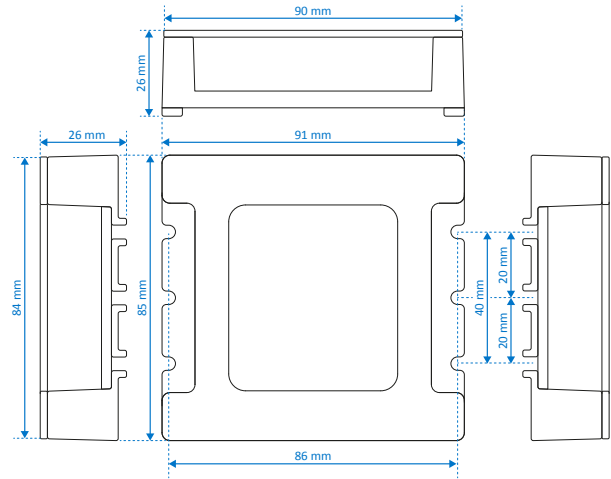
- Robust compact housing with screw brackets for secure fixing
- Build-in magnets for easy mounting on metal surfaces
- Both horizontal & vertical mounting allowed
- Diagnostic LED indicating potential issues
- Status LED indicating power & input/output operations
- 1 year warranty (optional 3 year extended warranty available)

Packaging

Netto Weight: 115g
 Items per carton 1 or 10 pcs

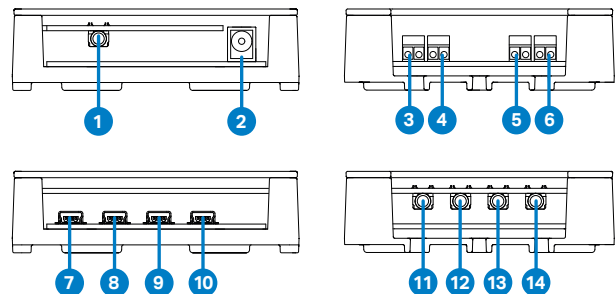
Mechanical dimensions

LxWxH: 91 x 86 x 26 mm
 Screw fixation: 20 / 40 x 85 mm



Hardware interfaces

1. 3.5 mm stereo jack socket for audio input
2. 12V Power input, 2.1mm DC socket
3. LED socket, screw terminal 1
4. LED socket, screw terminal 2
5. LED socket, screw terminal 3
6. LED socket, screw terminal 4
7. X-talk+ socket 1
8. X-talk+ socket 2
9. X-talk+ socket 3
10. X-talk+ socket 4
11. 3.5mm stereo Jack socket for Audio output 1
12. 3.5mm stereo Jack socket for Audio output 2
13. 3.5mm stereo Jack socket for Audio output 3
14. 3.5mm stereo Jack socket for Audio output 4



Ordering information

Product ID	Description	Quantity
XC-444	Xperience controller, Audio in, 4x Audio switch, 4x X-talk, 4x LED output (non programmable)	1 pc
XC-445	Xperience controller, Audio in, 4x Audio switch, 4x X-talk, 4x LED output (programmable)	1 pc

Nexmosphere

High Tech Campus 10 (Mμ building) T +31 40 240 7070
 5656 AE Eindhoven • The Netherlands E sales@nexmosphere.com

© 2017 Nexmosphere. All rights reserved. v1.0 / 02-17
 All content contained herein is subject to change without prior notice.